

Circulatory system

Define and distinguish:

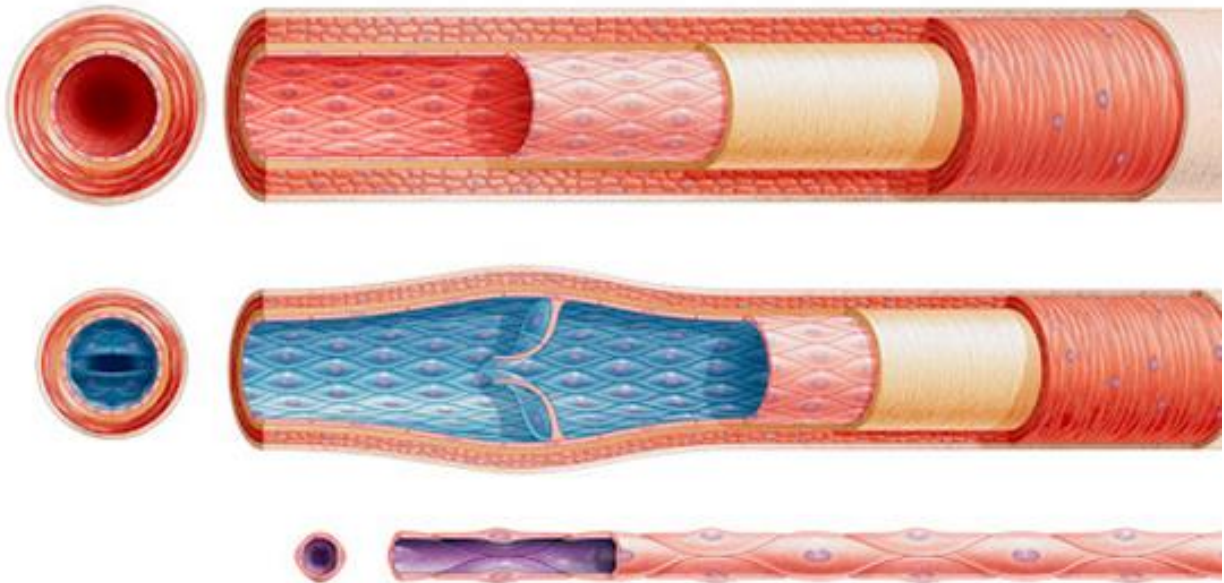
a) systemic circulation

b) pulmonary circulation

Research: The composition of blood. Draw a glass tube to illustrate your answer!

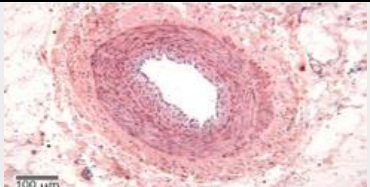
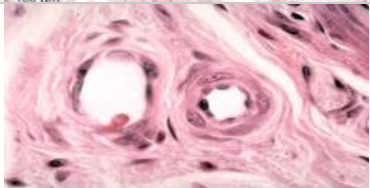
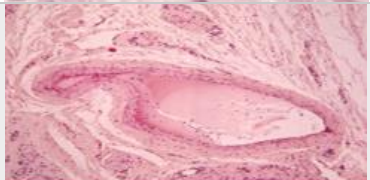


Label the blood vessels and the different layers below.

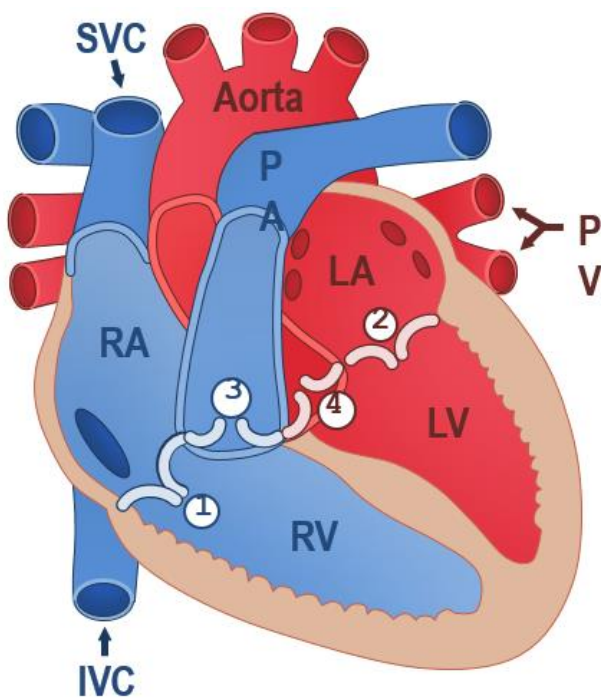


Describe blood movement in the different blood vessels below.

Compare and contrast the blood vessels, use the table below.

Vessel	Function	Pressure	Diameter	Wall	Micrograph
					
					
					

Label the heart properly.



Distinguish between systole and diastole.

Draw a diagram of the cardiac cycle. Include the pressure change over time in the atrium, ventricle and aorta.



A large empty rectangular box intended for drawing a diagram of the cardiac cycle and showing pressure changes over time in the atrium, ventricle, and aorta.

Describe how the heart rate is controlled.