

Biology
Standard level
Paper 3

8 November 2023

Zone A morning | Zone B morning | Zone C morning

Candidate session number

1 hour

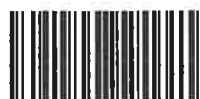
--	--	--	--	--	--	--	--	--	--

Instructions to candidates

- Write your session number in the boxes above.
- Do not open this examination paper until instructed to do so.
- Answers must be written within the answer boxes provided.
- A calculator is required for this paper.
- The maximum mark for this examination paper is **[35 marks]**.

Section A	Questions
Answer all questions.	1 – 3

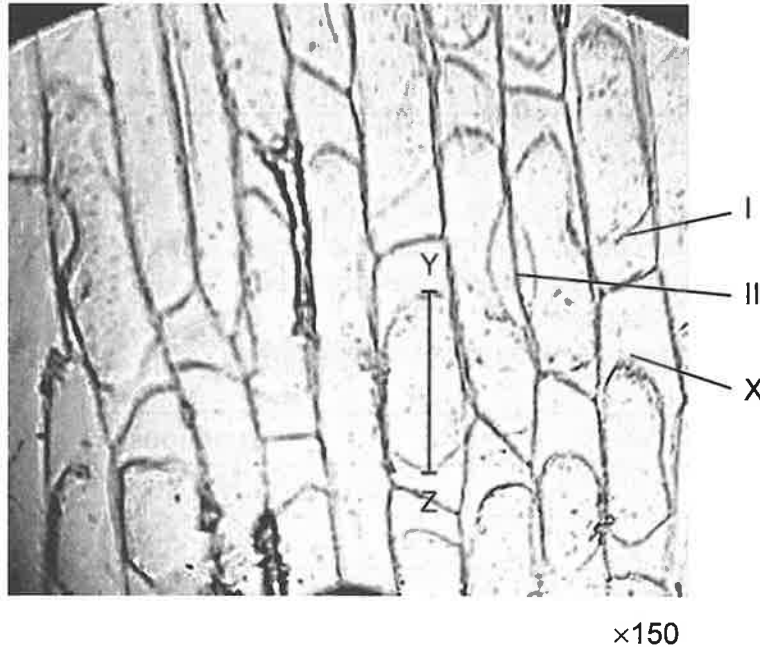
Section B	Questions
Answer all of the questions from one of the options.	
Option A — Neurobiology and behaviour	4 – 8
Option B — Biotechnology and bioinformatics	9 – 12
Option C — Ecology and conservation	13 – 17
Option D — Human physiology	18 – 22



Section A

Answer all questions. Answers must be written within the answer boxes provided.

1. The image was obtained with a mobile phone camera pointing down the eyepiece tube of a light microscope. It shows onion (*Allium cepa*) epidermal cells after immersion in a hypertonic salt solution during an experiment on osmosis.



- (a) State the names of structures I and II on the image.

[2]

- I.
- II.

(This question continues on the following page)



(Question 1 continued)

(b) (i) Identify what is found in the region labelled X. [1]

.....
.....

(ii) Explain the effect of the salt solution on these cells. [2]

.....
.....
.....
.....

(c) The length of one onion epidermal cell in the micrograph measured by the line Y-Z is 24 mm. Calculate the actual length of this cell in micrometres. [1]

..... μm

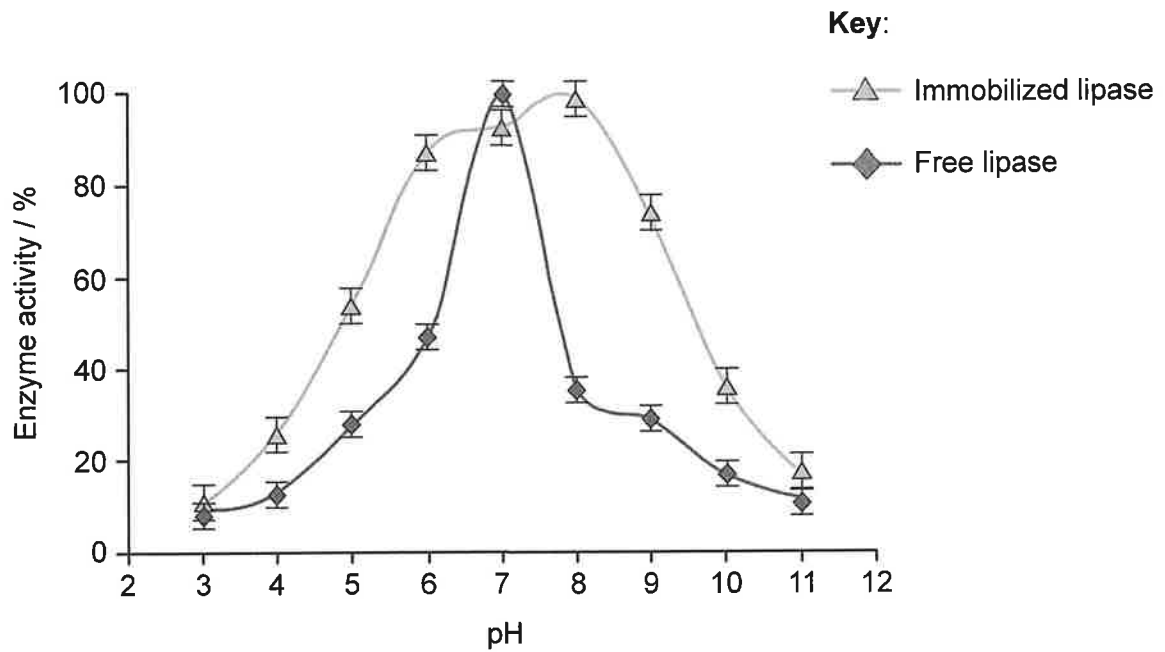


Please **do not** write on this page.

Answers written on this page
will not be marked.



2. Immobilized enzymes are often used in industrial processes. The enzyme lipase was obtained from the fungus *Aspergillus niger*. The relative activity of immobilized and free lipase was investigated at different pH values.



(a) Compare and contrast the effect of pH on the activity of free lipase and immobilized lipase. [3]

.....

.....

.....

.....

.....

.....

(b) State **one** variable which must be kept constant in this experiment. [1]

.....

.....

(c) State **one** application of immobilized enzymes. [1]

.....

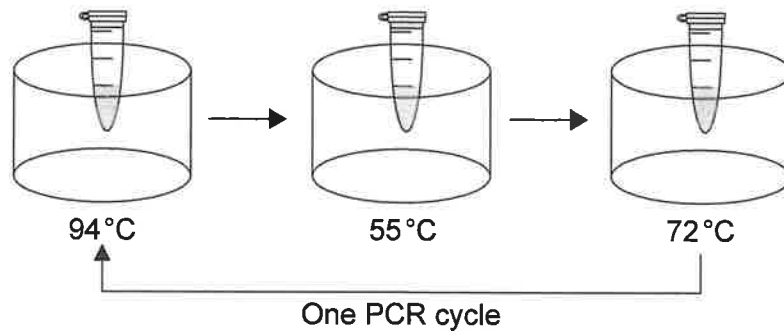
.....



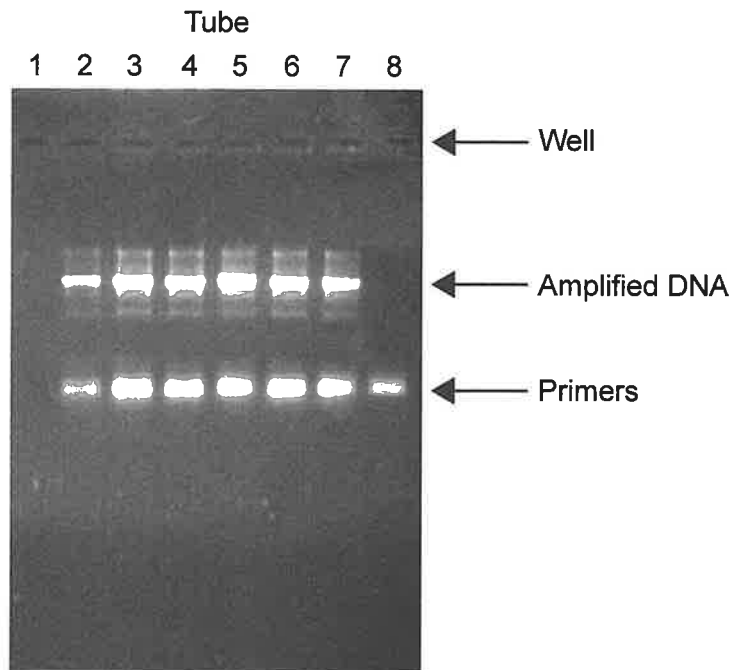
3. A polymerase chain reaction (PCR) was performed to amplify a small amount of DNA. Eight tubes were prepared as shown in the table.

	Mix of nucleotides, salts, buffer and polymerase	DNA	Primers
Control	✓	✓	✗
Control	✓	✗	✓
Six tubes	✓	✓	✓

The tubes were placed in a thermal cycler with the temperatures shown in the diagram and run for 25 cycles.



The image shows the result of gel electrophoresis on the eight samples.



(This question continues on the following page)



(Question 3 continued)

(a) State the number of the tube used as a control without DNA. [1]

.....
.....

(b) Explain the reason for changing the temperature during each cycle. [2]

.....
.....
.....
.....

(c) Predict the result that would be obtained if fewer cycles were used in this PCR process. [1]

.....
.....



36EP07

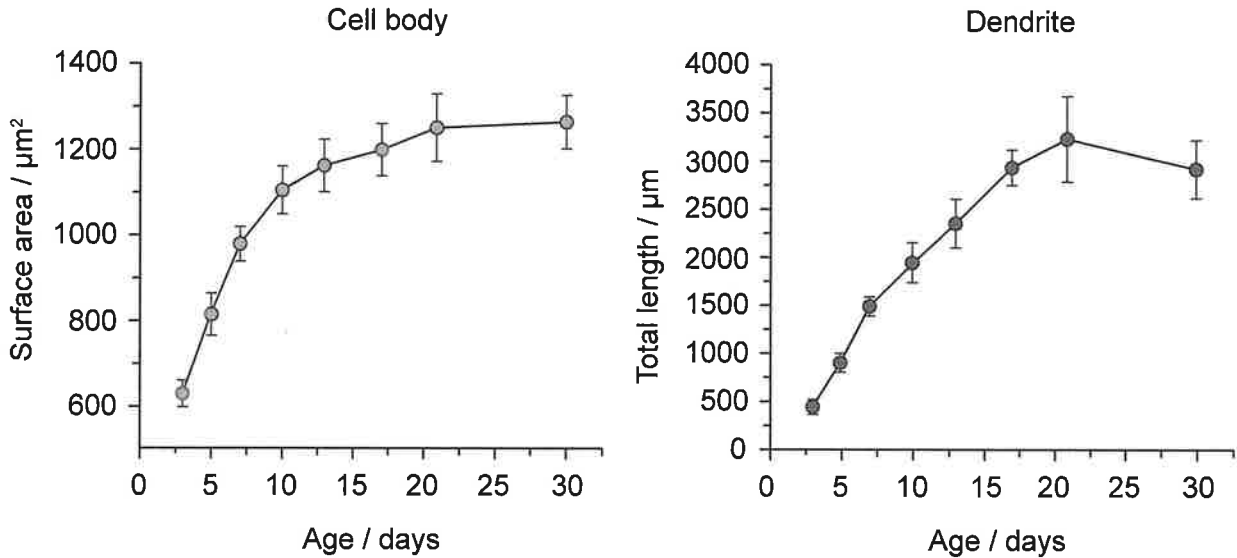
Turn over

Section B

Answer **all** of the questions from **one** of the options. Answers must be written within the answer boxes provided.

Option A — Neurobiology and behaviour

4. During early development, there are changes to the structure of neurons and to synaptic transmission. Changes in surface area of cell bodies and length of dendrites of neurons located in the cerebral cortex were examined in rats between 3 and 30 days after birth.



- (a) Describe the changes observed in the cerebral cortex neurons of rats between 3 and 30 days after birth. [2]

.....

.....

.....

.....

- (b) State the site of origin of neurons. [1]

.....

.....

(Option A continues on the following page)



(Option A, question 4 continued)

- (c) The outer surface of the cerebral cortex is smooth in rats and folded in humans.
Explain this difference.

[2]

.....

.....

.....

.....

(Option A continues on the following page)

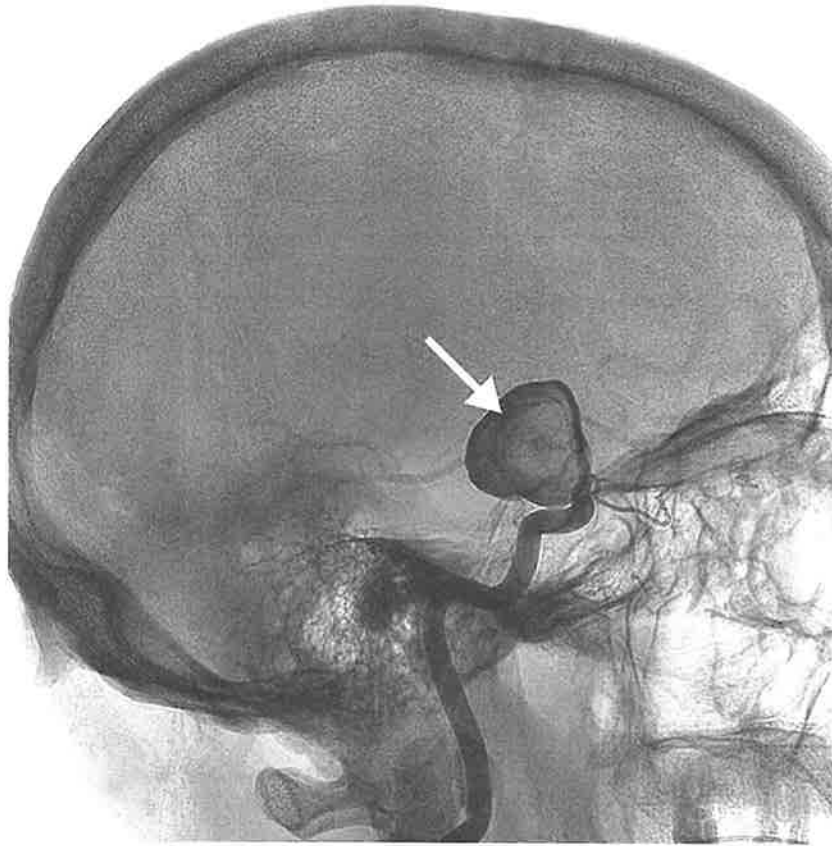


36EP09

Turn over

(Option A continued)

5. The image shows an angiogram (X-ray with a dye) of blood vessels in the brain of a patient who has suffered a stroke in Broca's area. The arrow shows the exact location where the stroke has occurred.



- (a) Outline how a stroke may have occurred.

[1]

.....
.....

- (b) Explain the likely consequences of a stroke in Broca's area.

[2]

.....
.....
.....
.....

(Option A continues on the following page)



(Option A, question 5 continued)

(c) Explain the change in the brain which could lead to recovery from a stroke. [2]

.....

.....

.....

.....

(Option A continues on the following page)



36EP11

Turn over

(Option A continued)

6. Electretinography measures the electrical response of the light-sensitive cells in the eyes. It is used to diagnose some acquired and inherited diseases of the retina.



- (a) (i) State **one** example of an inherited retinal disease. [1]

.....

.....

- (ii) State which cells in the retina are sensitive to some but not all wavelengths of light. [1]

.....

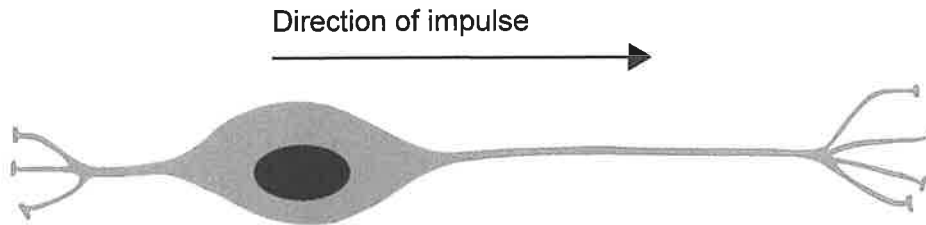
.....

(Option A continues on the following page)



(Option A, question 6 continued)

(b) The diagram shows a retinal bipolar cell and the direction of the nerve impulse.



(i) Three light-sensitive cells form synapses with this bipolar cell. State the name of these light-sensitive cells. [1]

.....

.....

(ii) State the type of cell that conveys signals from bipolar cells to the brain. [1]

.....

.....

(Option A continues on the following page)

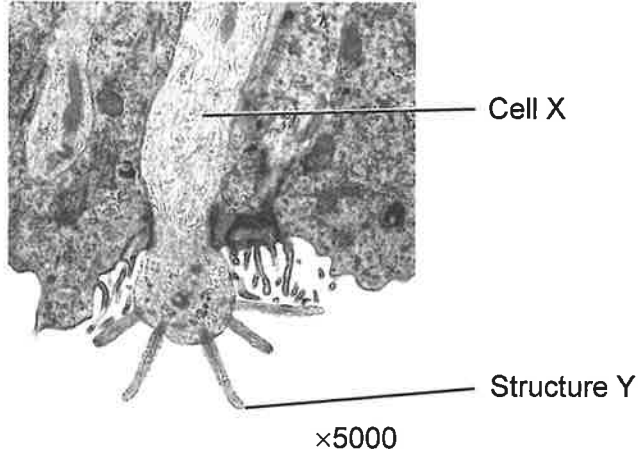


36EP13

Turn over

(Option A continued)

7. The micrograph shows a section of the epithelium that lines the nasal cavity.



(a) Identify cell X. [1]

.....

.....

(b) State the function of structure Y. [1]

.....

.....

(Option A continues on the following page)



(Option A continued)

8. Explain how the roles of different parts of the brain can be identified.

[4]

A large rectangular box containing 25 horizontal dotted lines for writing the answer to question 8.

End of Option A

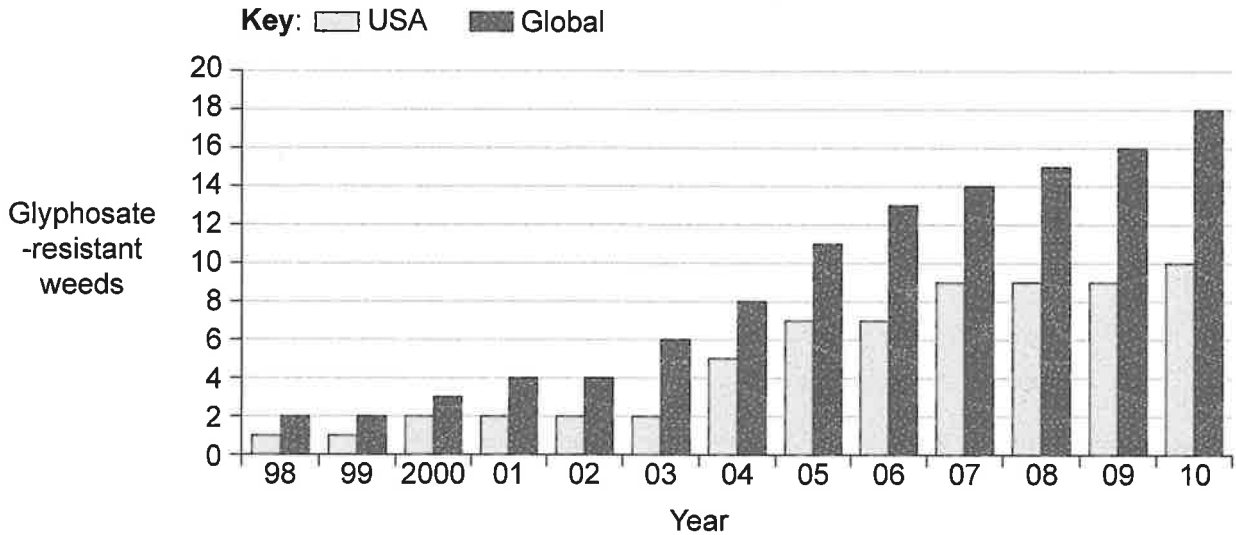


36EP15

Turn over

Option B — Biotechnology and bioinformatics

9. Crops such as soybean (*Glycine max*) have been genetically modified to become glyphosate-tolerant, allowing the use of glyphosate-containing herbicides to kill weeds without affecting crops. The graph shows global trends and US trends in the number of weed species that have become resistant to glyphosate.



(a) (i) Identify the year with the greatest number of **new** glyphosate-resistant weed species globally.

[1]

.....

.....

(ii) Suggest, giving a reason, **one** consequence of glyphosate-resistant weeds to agriculture.

[1]

.....

.....

(iii) During genetic modification, soybean cells are exposed to bacteria carrying plasmids with the glyphosate-resistance gene. Suggest a method used by scientists to distinguish soybean cells which have taken up the gene from those which have not.

[1]

.....

.....

(Option B continues on the following page)



(Option B, question 9 continued)

(b) (i) State the name given to DNA containing genes from two unrelated species. [1]

.....
.....

(ii) Describe electroporation as a method of genetic transformation. [2]

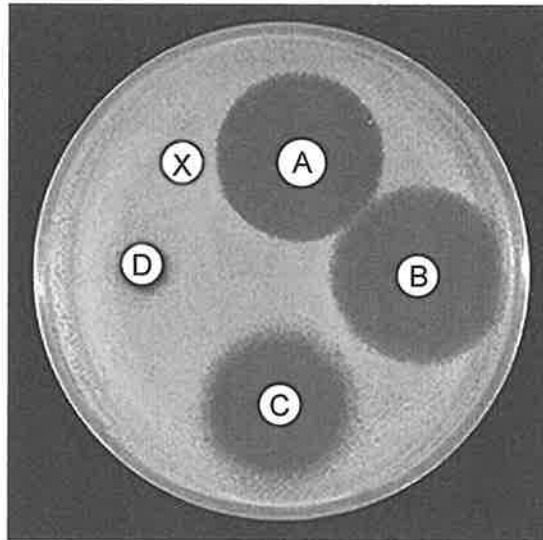
.....
.....
.....
.....

(Option B continues on the following page)



(Option B continued)

10. *Actinomyces viscosus*, a Gram-positive bacterium which causes tooth decay, was spread onto an agar plate. A control disc (X) and four paper discs, each containing an antibacterial agent (A, B, C, D) were placed onto the agar plate. The photograph shows the plate after incubation at 25 °C for 36 hours.



(a) (i) Analyse the effect of the antibacterial agents on *A. viscosus*. [2]

.....

.....

.....

.....

(ii) Outline a reason for incubating the agar plate for 36 hours. [1]

.....

.....

(b) Distinguish between Gram-positive bacteria and Gram-negative bacteria. [2]

Feature	Gram-positive	Gram-negative
Colour after Gram staining		
Cell wall structure		

(Option B continues on the following page)



(Option B continued)

11. Microbial pathogens may grow during harvesting and processing of seafood, posing health risks to consumers. The bacterium *Vibrio parahaemolyticus* is one of the pathogens which forms biofilms on food and on food contact surfaces during processing. *V. parahaemolyticus* biofilm formation was investigated at different surface textures provided by stainless steel (smooth), shrimp shell (slightly rough) and crab shell (very rough).



(a) Discuss whether the results support the hypothesis that rough surfaces encourage biofilm adhesion and development. [2]

.....

.....

.....

.....

(b) (i) State **one** emergent property of biofilms. [1]

.....

.....

(ii) Outline **one** beneficial use of biofilms. [2]

.....

.....

.....

.....

(Option B continues on page 21)



Please **do not** write on this page.

Answers written on this page
will not be marked.



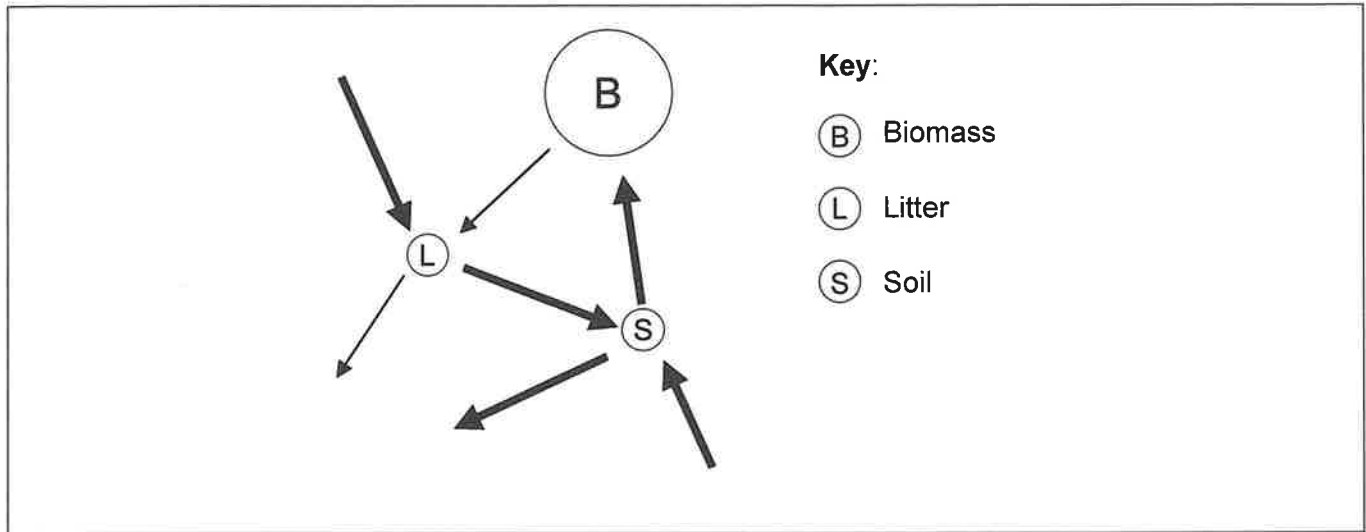
Please **do not** write on this page.

Answers written on this page
will not be marked.



Option C — Ecology and conservation

13. The Gersmehl diagram shows the interrelationships between nutrient stores and nutrient flows in the tropical rainforest ecosystem.



(a) (i) State the name of a process that decreases the soil nutrient store. [1]

.....

.....

(ii) Breakdown of rock (weathering) can add nutrients to the ecosystem. On the diagram, label with the letter X the arrow that shows the flow of nutrients released by weathering. [1]

(b) The Gersmehl diagram shows a large flow of nutrients from litter to soil in a tropical rainforest ecosystem. Explain this large flow. [2]

.....

.....

.....

.....

(Option C continues on the following page)



(Option C continued)

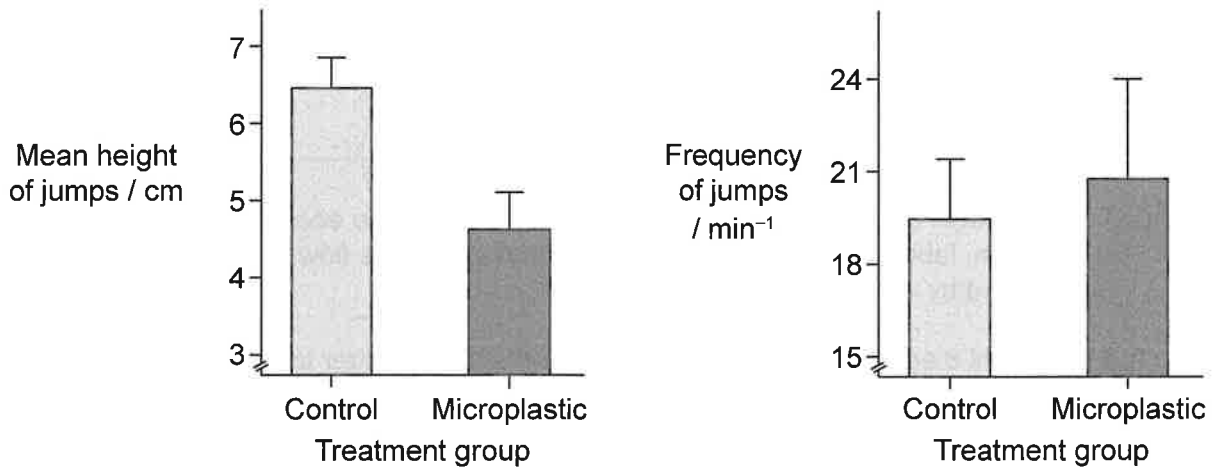
14. The impact of microplastics on the ecology of coastal biota was assessed using beach hoppers (*Platorchestia platensis*), small marine crustaceans which feed on marine sediments. These crustaceans have the ability to jump, which allows them to escape from predators.



Scientists investigated the possible effects of microplastics on their behaviour and survival, by observing the height and frequency of jumps in two groups of beach hoppers:

- experimental group: fed on marine sediments contaminated with microplastics
- control group: fed on uncontaminated marine sediments.

The graphs show the results.



- (a) Using the data, discuss the effect that ingestion of microplastic will have on the success of beach hoppers in escaping from predators in their natural environment. [2]

.....

.....

.....

.....

(Option C continues on the following page)



(Option C, question 14 continued)

(b) Macroplastics also affect the survival of other marine organisms. Outline how this may happen.

[2]

.....

.....

.....

.....

(Option C continues on page 27)



36EP25

Turn over

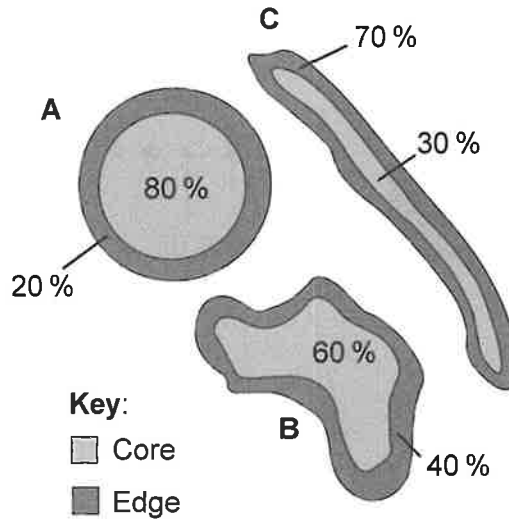
Please **do not** write on this page.

Answers written on this page
will not be marked.



(Option C continued)

15. The diagrams show three remaining areas of forest with different shapes after clearance for agriculture or human development. They all have the same total area but differ in the proportions of core and edge areas.



(a) Predict with a reason which forest would preserve the highest number of bird species native to the forest.

[1]

.....

.....

(b) Outline the role of wildlife corridors between nearby nature reserves in preserving biodiversity.

[3]

.....

.....

.....

.....

.....

.....

(Option C continues on the following page)

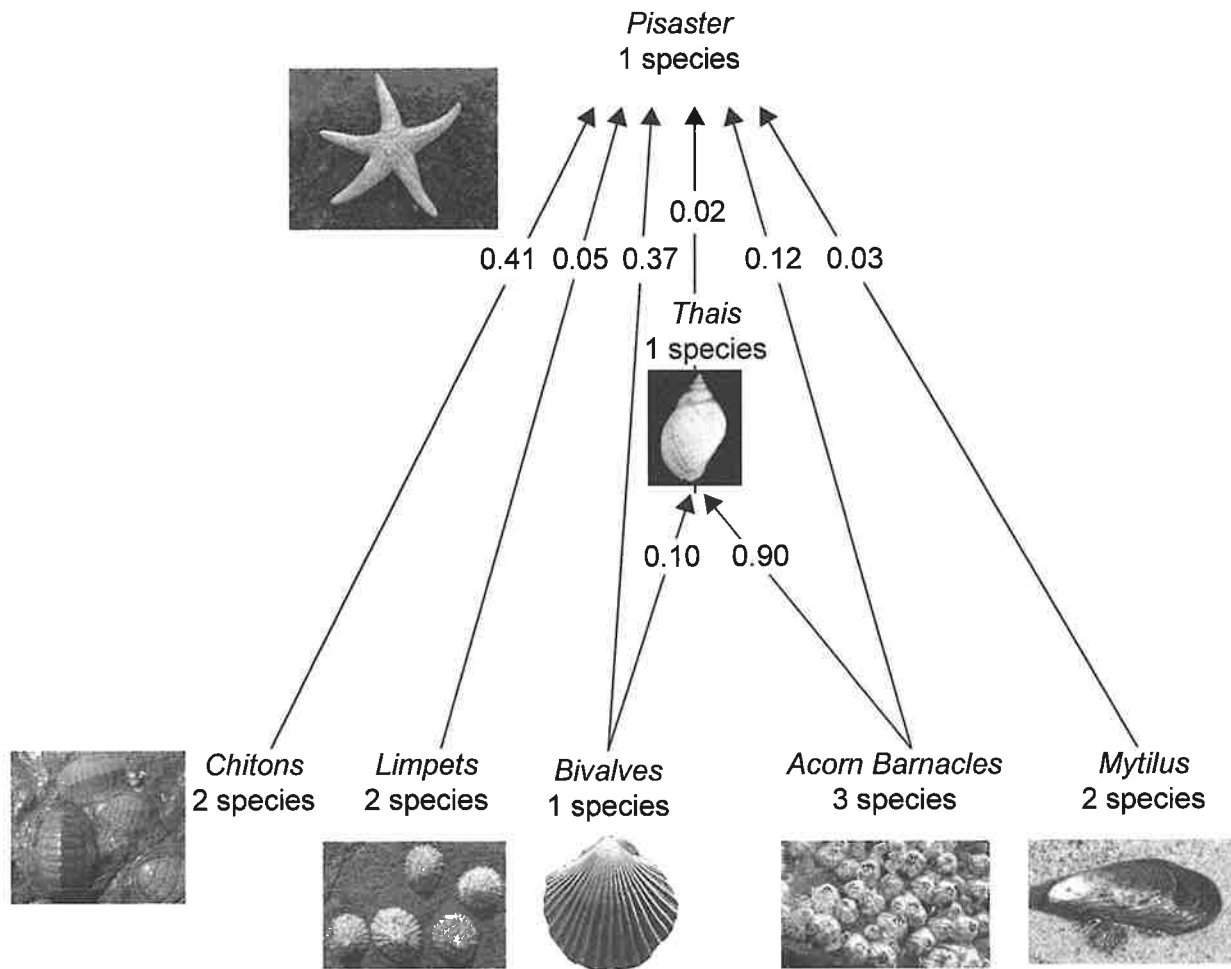


36EP27

Turn over

(Option C continued)

16. Feeding relationships between organisms on rocky shores along the Pacific Coast of North America were studied. The food web shows the proportions of the total energy consumed by the two carnivorous species, a starfish (*Pisaster ochraceus*) and a small gastropod (*Thais emarginata*).



(Option C continues on the following page)



(Option C, question 16 continued)

- (a) Identify the main source of energy of *Thais*. [1]

.....
.....

- (b) Limpets feed on photosynthetic algae. Identify the trophic level of limpets. [1]

.....
.....

- (c) *Pisaster* is considered a keystone species. Explain the effects of *Pisaster* on this community. [2]

.....
.....
.....
.....

(Option C continues on the following page)



36EP29

Turn over

Option D — Human physiology

18. L-gulonolactone oxidase (GLO) is an enzyme that catalyses the production of ascorbic acid (vitamin C) in the body of some animals. Animals having a mutated form of the gene that codes for the enzyme GLO cannot synthesize ascorbic acid.

Daily production of ascorbic acid in animals	
Animal	mg kg ⁻¹ body mass day ⁻¹
Mouse	275
Guinea pig	0
Dog	40
Human	0
Snake	10
Rabbit	226
Goat	150

(a) (i) Identify **one** animal from the table for whom ascorbic acid is not an essential nutrient.

[1]

.....

(ii) State **one** role of ascorbic acid in humans.

[1]

.....

.....

(b) The appetite control centre in the brain is stimulated by several hormones. Identify **two** of these hormones and the structures that secrete them.

[2]

Hormone	Secreted by

(Option D continues on the following page)

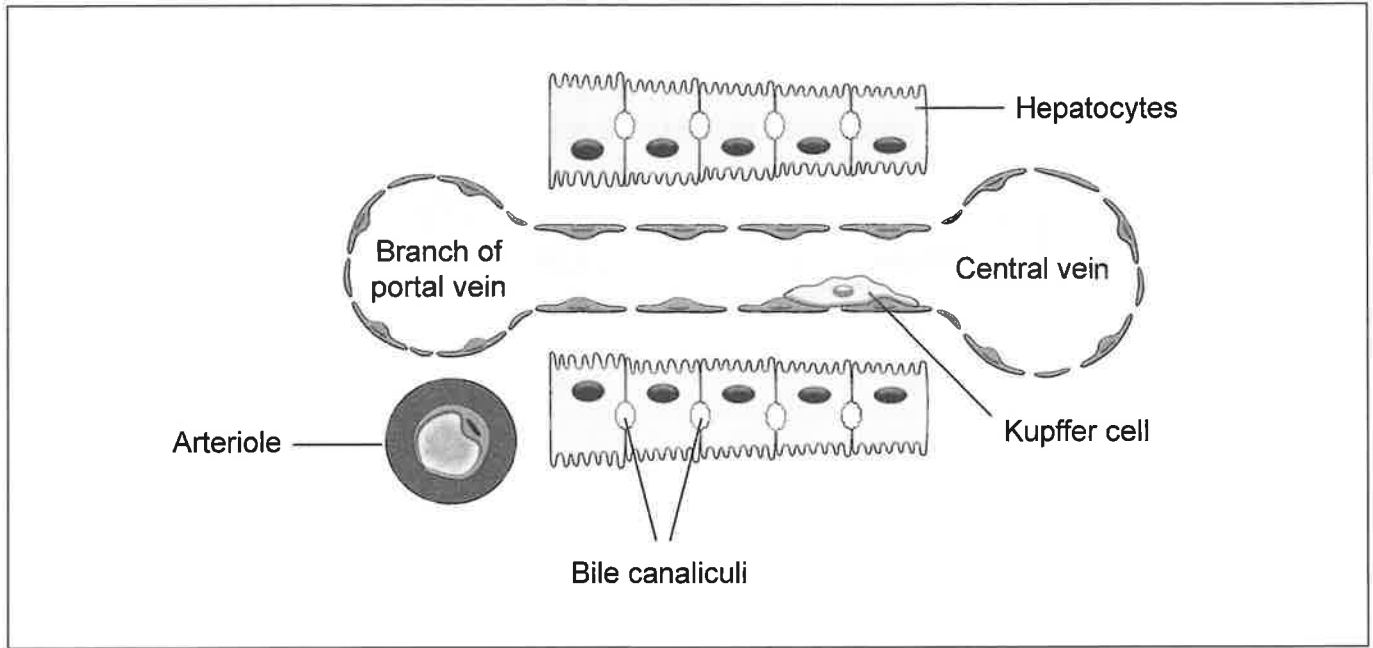


36EP31

Turn over

(Option D continued)

19. The diagram shows a detail of the internal structure of the sinusoid of the liver.



- (a) On the diagram, draw arrows to show the direction of movement of
 - (i) oxygen supplied to hepatocytes [1]
 - (ii) toxins after detoxification. [1]
- (b) Outline the function of hepatocytes in the regulation of nutrient levels. [2]

.....

.....

.....

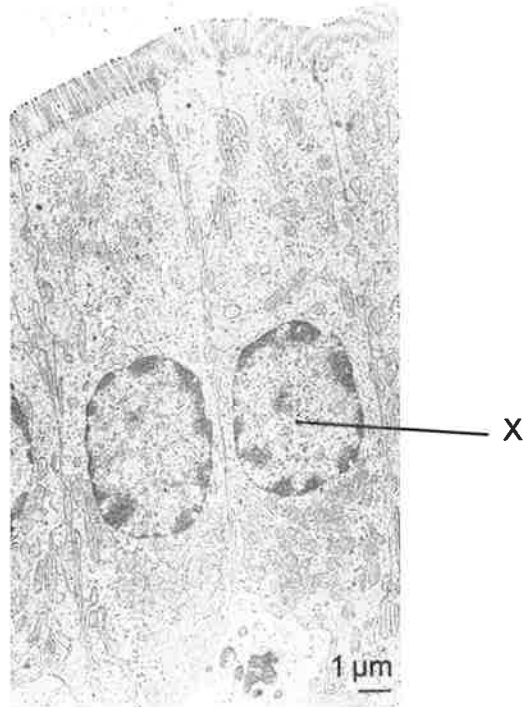
.....

(Option D continues on the following page)



(Option D continued)

20. The electron micrograph shows details of the inner lining of the small intestine.



(a) State the name of the cell labelled X on the image. [1]

.....

.....

(b) Explain adaptations of this cell to its function. [3]

.....

.....

.....

.....

.....

.....

(Option D continues on the following page)

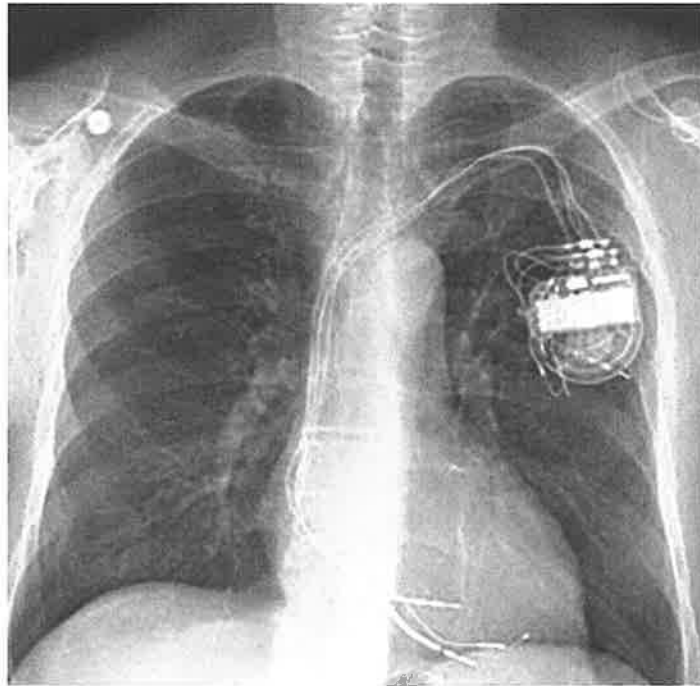


36EP33

Turn over

(Option D continued)

21. The X-ray was taken of a patient who has an artificial pacemaker implanted under the skin.



(a) (i) State the function of an artificial pacemaker. [1]

.....
.....

(ii) State the apparatus used by doctors to detect that a patient needs an artificial pacemaker. [1]

.....
.....

(b) Explain the role of the atrioventricular node in the cardiac cycle. [2]

.....
.....
.....
.....

(Option D continues on the following page)



Disclaimer:

Content used in IB assessments is taken from authentic, third-party sources. The views expressed within them belong to their individual authors and/or publishers and do not necessarily reflect the views of the IB.

References:

2. Zdarta, J., Klapiszewski, L., Wysokowski, M., Norman, M., Kolodziejczak-Radzimska, A., Moszynski, D., Ehrlich, H., Maciejewski, H., Stelling, A.L. and Jesionowski, T., 2015. Chitin-Lignin Material as a Novel Matrix for Enzyme Immobilization. *Marine Drugs*, 13(4), pp.2424–2446.
4. Zhang, Z.-w., 2004. Maturation of Layer V Pyramidal Neurons in the Rat Prefrontal Cortex: Intrinsic Properties and Synaptic Function. *Journal of Neurophysiology*, 91(3), pp.1171–1182.
5. Mayo Clinic, n.d. *Cerebral angiogram*. [image online] Available at: <<https://www.mayoclinic.org/diseases-conditions/stroke/diagnosis-treatment/drc-20350119>> [Accessed 13 March 2020].
6. Top Doctors, n.d. [*Electroretinography*]. [image online] Available at: <www.topdoctors.es/files/Image/large/56cf0b3a-2720-4954-b700-550d5b793aaa.png> [Accessed 13 March 2020].
7. [*Micrograph*], n.d. [image online] Available at: <<https://i.pinimg.com/>> [Accessed 1 April 2020].
9. National Research Council, 2010. *FIGURE 2-6 Number of weeds with evolved glyphosate resistance*. [graph] *The Impact of Genetically Engineered Crops on Farm Sustainability in the United States*. Washington, DC: The National Academies Press, p.78.
11. Han, N., Mizan, M.F.R., Jahid, I.K. and Ha, S.-D., 2016. *Food Control*, 70, pp.161–166. REFERENCE REDACTED.
14. Image: Iowa State University, Department of Entomology, n.d. *Platorchestia platensis*. [image online] Available at: <<https://bugguide.net/node/view/1130911/bgimage>> [Accessed 1 April 2020].
Graphs: Tosetto, L., Brown, C. and Williamson, J.E., 2016. Microplastics on beaches: ingestion and behavioural consequences for beach hoppers. *Marine Biology*, 163(10). <https://doi.org/10.1007/s00227-016-2973-0>.
15. Environment Canada, 2013. *How Much Habitat is Enough?* 3rd ed. [document online] Available at: <<https://www.documentcloud.org/documents/2999368-THUNDER-BAY-How-Much-Habitat-Is-Enough-3rd-Ed-2013.html>> [Accessed 13 March 2020].
16. Food web: Paine, R.T., 1966. Food web complexity and species diversity. *The American Naturalist*, 100(910), pp.65–75.
Pisaster image: Kirkhart, J., 2007. *Pisaster brevispinus*. [image online] Available at: <<https://commons.wikimedia.org/wiki/File:Pisasterbrevispinus.jpg>> [Accessed 1 April 2020].
Thais image: [*Dog whelk shell*], n.d. [image online] Available at: <https://en.wikipedia.org/wiki/Dog_whelk> [Accessed 25 June 2020].
Chitons image: Wojcik, J., n.d. *The Chitons*. [image online] Available at: <<https://bogleech.com/chitons.html>> [Accessed 19 March 2020].
Limpets image: Ferree, W., 2015. *Common limpets (Patella vulgata) adhering to tidal zone rocks*. [image online] Available at: <<https://ferreekeeper.wordpress.com/tag/limpet/>> [Accessed 19 March 2020].
Bivalves image: Oxford University Museum of Natural History, 2006. [*Bivalve*]. [image online] Available at: <<http://www.oum.ox.ac.uk/thezone/fossils/inverts/bivalve.htm>> [Accessed 19 March 2020].
Acorn barnacles image: Slater Museum of Natural History, n.d. *Acorn Barnacle (Balanus glandula)*. [image online] Available at: <<https://www.pugetsound.edu/academics/academic-resources/slater-museum/exhibits/marine-panel/acorn-barnacle/>> [Accessed 19 March 2020].
Mytilus image: Bryant, P.J., 2007. *California mussel*. [image online] Available at: <<http://nathistoc.bio.uci.edu/Molluscs/Mussel.htm>> [Accessed 19 March 2020].
18. Clark, D., n.d. How to get the most out of vitamin C. [online] Available at: <<https://herbscientist.com/how-to-get-the-most-out-of-vitamin-c/>> [Accessed 26 June 2020].
19. Xu, J., Liu, X., Koyama, Y., Wang, P., Lan, T., Kim, I.-G., Kim, I.H., Ma, H.-Y. and Kisseleva, T., 2014. *Frontiers in Pharmacology*. <https://doi.org/10.3389/fphar.2014.00167>. REFERENCE REDACTED.
20. Ferrary, E., Cohen-Tannoudji, M., Pehau-Arnaudet, G., Lapillonne, A., Athman, R., Ruiz, T., Boulouha, L., El Marjou, F., Doye, A., Fontaine, J.-J., Antony, C., Babinet, C., Louvard, D., Jaisser, F. and Robine, S., 1999. *The Journal of Cell Biology*, 146(4), pp.819–830. REFERENCE REDACTED.
21. University of Utah Health, n.d. *Pacemakers, defibrillators and lead extraction*. [image online] Available at: <<https://healthcare.utah.edu/cardiovascular/treatments/pacemakers-defibrillators.php>> [Accessed 19 March 2020].

